



ROSE HAVEN

ANNUAL REPORT 2022

Service Location
1740 NW Gilsan St.
Portland, OR 97209

Mailing Address
PO Box 10405
Portland, OR 97296

Phone 503-248-6364
Email info@rosehaven.org
Web rosehaven.org



Introduction

With unprecedented community support, we completed our \$3 million “Home for the Haven” capital campaign centered around building a new facility that brought guests back indoors after years of mainly outdoor services during the pandemic. On International Women’s Day, after 13 months designing, fundraising, building, and preparing our new Home for the Haven, we welcomed guests inside on March 8, 2022.

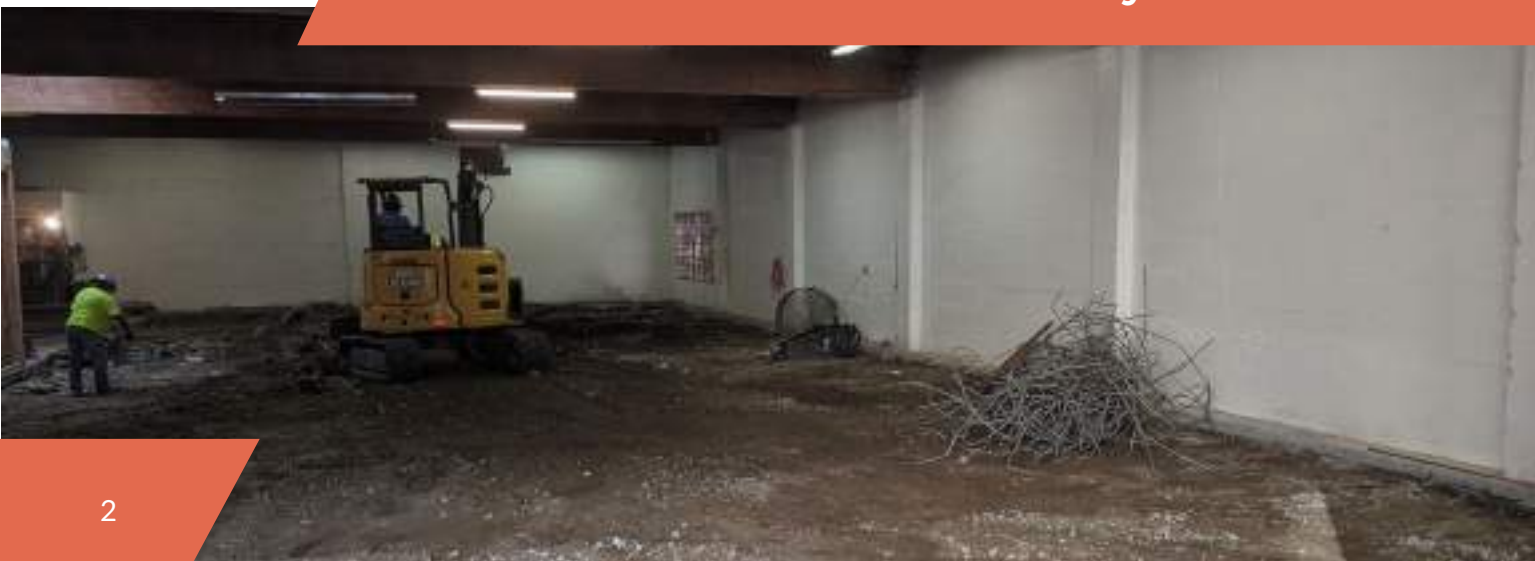
This relocation marked our long-envisioned move to a larger facility to accommodate the breadth of services needed to support a rapidly growing demographic of women, children and marginalized genders experiencing homelessness and poverty in our city. With triple the former footprint and increased safety and accessibility, we re-established programs indoors and increased capacity to welcome and serve more community members in need.

As you read this annual report, know how grateful we are to have provided community and services in our beautiful, trauma-informed home that appropriately welcomed, honored, and lifted the incredible 3,027 guests we served together in 2022.

This is just the beginning. Thank you for your ongoing support as we continue to Heal People and Heal Portland.



Rose Haven’s annual report highlights the work we accomplished together, and 2022 was one for the record books. As we commemorated the historic milestone of 25 years of service, Rose Haven simultaneously moved into its dream facility.





Twenty-five years ago, a seed was planted that has blossomed into one of the most important resources for thousands of our vulnerable neighbors in Portland.

In 1997, Sr. Cathie Boerboom and her team spent months surveying women experiencing homelessness, hearing from them what they wanted and needed most. To their surprise, the resounding answers were relational rather than material. While void of so much, these women craved love, trust, and safety above all else. Their collective voice became the foundation for Rose Haven, and it continues to define our work today.

Rose Haven was the first of its kind 25 years ago, as the only agency serving women and children during the daytime hours. Today we remain the sole agency in Portland serving this population, addressing their need for safety, resources, and community connection. The demand for our services has grown exponentially year over year.

As our agency celebrates its silver anniversary, we hold everlasting gratitude for our founders, who could not have realized how significant Rose Haven would be in 2022. We are committed to continuing their legacy based on their original values, with Compassion, Individual Worth, Reconciliation, and Love in Action at the heart of our work.

“Our vision is a community where everyone has safety, stability, love, health and home.”

Rose Haven Mission

To provide day shelter, resources, emotional support and community connections to women, children and marginalized genders experiencing homelessness and poverty.

Why Portland Needs Us

Oregon has the 2nd highest rate of unsheltered homeless people in the country, and Rose Haven is the only day shelter and community center in Multnomah County supporting those who are women, children and marginalized genders. We know the greatest contributors to homelessness for women in Oregon include domestic and sexual violence, unaffordable housing, wage inequity, and mental and physical disabilities. We also know that each person's experience is unique and layered, and that those impacted need a helping hand to navigate the complexities of their worlds.

How We Show Up

Rose Haven is a low-barrier agency that exists not to just meet basic needs, but to nurture souls and improve the emotional, mental and physical well-being of our guests and our community as a whole. We understand our agency exists within larger systems of oppression, and we seek to disrupt those structures through radical hospitality, advocacy on an individual and community level, and meaningful connections to resources. Recognizing the isolation and loneliness that homelessness can create, we work to hold a space where all guests can connect, have voice and be empowered.

Over
80%

of houseless folks are living with one or more physically/mentally disabling conditions

Source: 2022 Multnomah County Point-in-Time Count

Women earn
57-84%

to the dollar that men make, depending upon race and ethnicity

Source: Oregon Center for Public Policy

Portland's housing expenses are
66%

higher than the national average

Source: PayScale

Rates of domestic violence are especially high for people who identify as

female **54%**, transgender **62%**, or gender non-conforming **61%**

Source: 2022 Multnomah County Point-in-Time Count

Service Impact

Total
Guests Served

3,027

Adults — 2,219
Children — 808

New
Guests

1,291

New Adults — 836
New Children — 455

Total
Onsite Visits

22,060

Adults — 20,853
Children — 1,207

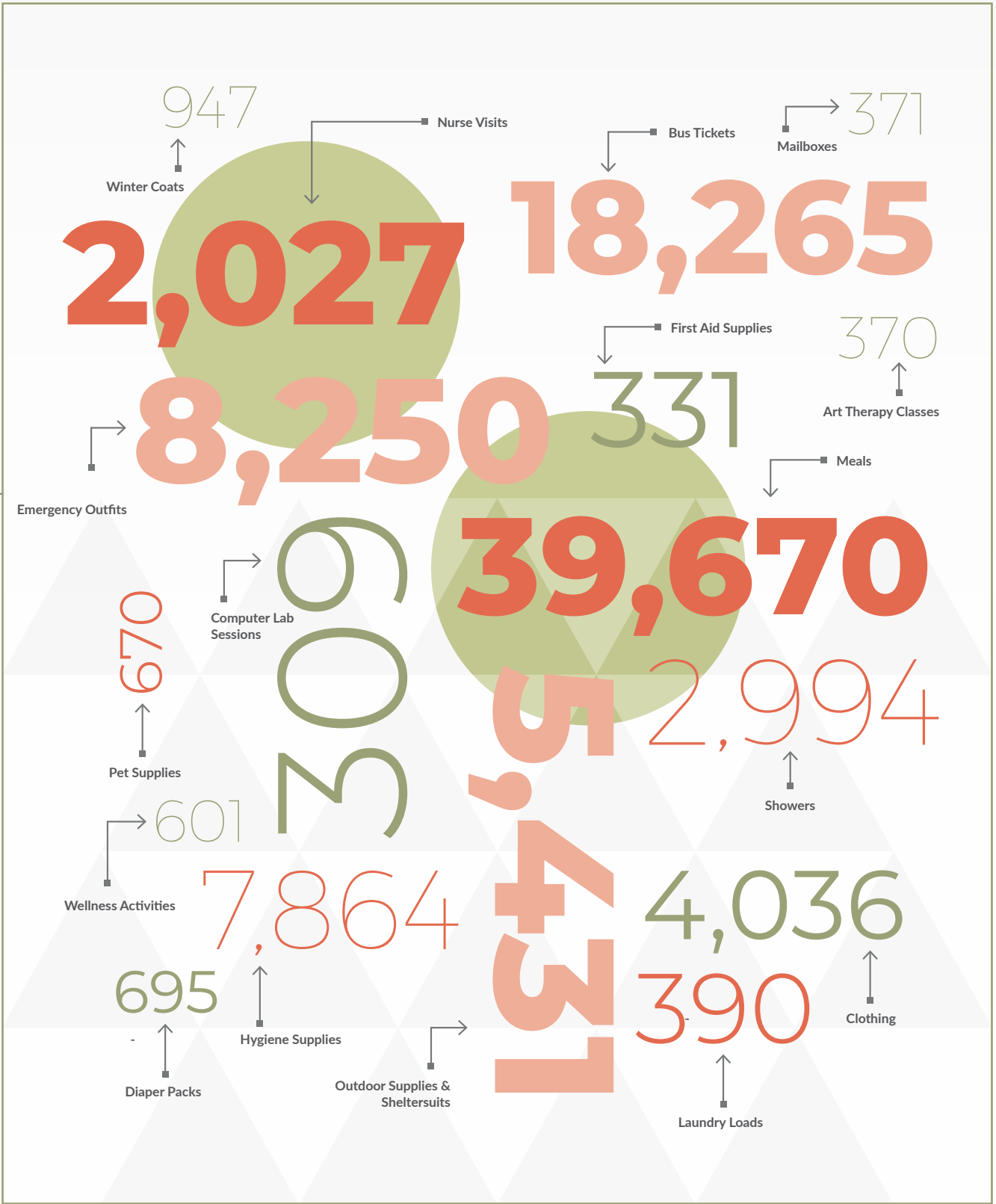
Advocacy
& Referrals

2,225

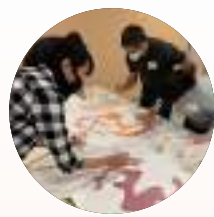
Intake Meetings — 836
1:1 Meetings — 1,389

- Referral Applications (737)
- Financial Assistance (unduplicated: 636)
- Financial Assistance (duplicated: 1,425)

Onsite Services, Activities, and Supplies Distributed



Milestones by Month



Jan
2022

Feb
2022

Mar
2022

Jul
2022

Aug
2022

Sep
2022

Home for the Haven campaign hits \$2.6m
YoPro Social
Give!Guide concludes with record \$50k raised
Clackamas Community College nursing students return
Construction of our new building completed

New agency logo and branding revealed
Valentine's Day celebration
10 Barrell creates special Rose Haven beer
Community mural painting
Packed and moved to our new location

Home for the Haven campaign goal met \$3.1M
Orientations for volunteers
Sidewalk floral installation
Grand Opening, March 8 – International Women's Day!
Featured at Trailblazers Women's History Night
Corkscreu unveils Haven wine
World Cup Coffee creates Rose Haven Roast

National University of Natural Medicine services return
Summer Picnic
Macy's Beauty Day event

Portland Fashion week runway show features upcycled garments created by guests
Back to School Giveaway for 300 kids with Dream North Foundation
Have a Sole partnership begins

Standard volunteer fair
Day of Dignity with Islamic Relief USA
Staff and Board strategic planning session
University of Portland nurses begin onsite
Food for Thought supporter dinner
2022-23 Youth Outreach Board kicks off

Apr
2022

May
2022

Jun
2022

Oct
2022

Nov
2022

Dec
2022

Community Partner open house
Snow day!
Bingo, sewing and soul collage activities restart

9th Annual RRW raises \$168K
Chinese interpreter begins onsite
DEI Committee surveys families

Resource Fair onsite with 25 agencies
Open house for supporters
Pride Celebration
Expanded afternoon hours
Designated family afternoons begin on Wednesdays
Beading group returns

Sheltersuit collaboration distributes 180 shelterbags to guests
Crisis de-escalation workshop with Portland Street Response
Old Town InReach Program begins
Gensler/Rose Haven win 2022 Design Excellence Awards

25th Anniversary Celebration
Harvest Meal of Gratitude with guests
Rose Haven joins National Women's Shelter Network

New Winter Coat Giveaway with prAna
Aurora Chorus concert honors Rose Haven nursing program founder, Peggy McComb
Holiday gift distribution to 550 children and 170 moms
Holiday Extravaganza for record 190 guests



2022 Demographic Data

Race		Age	
African/African American	161	0-18	808
Asian/Asian American	71	19-29	205
Caucasian/White	676	30-39	457
Combined Ethnicity	128	40-49	478
Eastern European	17	50-59	393
Hispanic/Latinx	73	60+	376
Middle Eastern/Arab	1	Average Adult Age	50
Native American/Indigenous	93	Maximum Age	88
Native Hawaiian/Pacific Islander	13		
Unanswered	695		

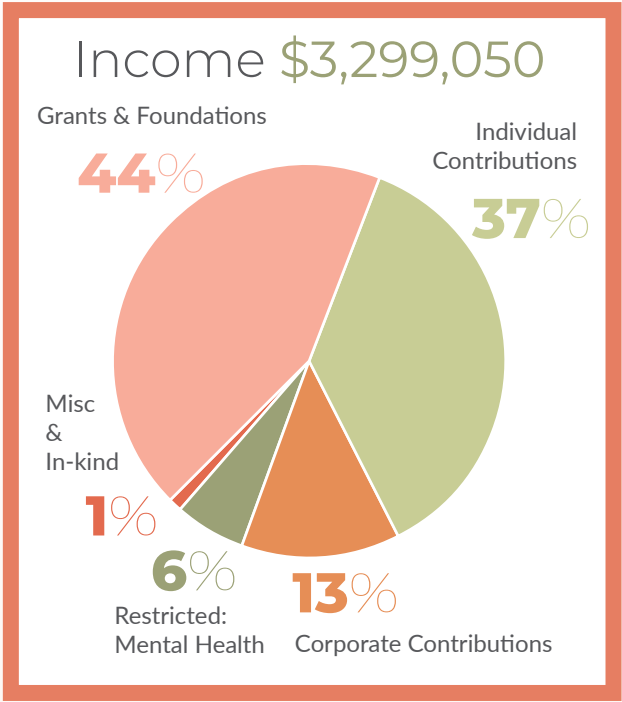
Our Commitment to Equity

Equity and inclusion are central to our programming, and we focus our efforts on those most vulnerable and marginalized. We welcome guests of all backgrounds, regardless of age, race, class, ethnicity, faith, culture, language, marginalized gender identity, sexual identity, ability, citizenship status and other identities and experiences.



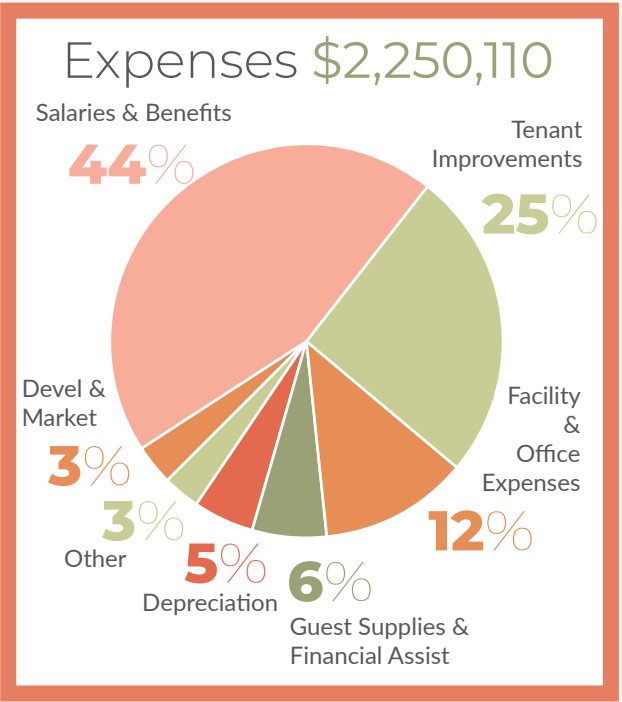
FY22 Financials

January 1 - December 31



Grants & Foundations	\$1,442,129
Individual Contributions	\$1,217,847
Corporate Contributions	\$421,597
Restricted: Mental Health	\$200,000
Miscellaneous and In-kind	\$17,477
TOTAL INCOME	\$3,299,050

January 1 - December 31



Salaries & Benefits	\$998,204
Tenant Improvements	\$561,360
Facility & Office Expenses	\$278,129
Guest Supplies & Financial Assistance	\$146,225
Depreciation	\$113,013
Development & Marketing	\$77,859
Other: Professional Services/Staff & Volunteer Development/Restricted Expenses	\$75,320
TOTAL EXPENSES	\$2,250,110

* Surplus revenue dedicated to program expansion and mental health.

Programs Overview



Hospitality

During hospitality hours, Rose Haven provides healthy meals and the opportunity for guests to interact with others in a safe and welcoming community setting while enjoying companionship rarely experienced when living on the street.

Clothing and Emergency Supplies

Rose Haven's new facility features an onsite boutique where guests can shop free of charge for themselves and their children. Additionally, we provide essential items to support guests living outside in emergent situations by distributing life-saving outdoor supplies, emergency clothing, and hygiene kits.

Wellness & Showers

Mental and physical wellness are central to our programming. Showers, bathrooms, and hand washing sinks are accessible daily. In addition we have partnerships with various community health workers and student nurses who are available to Rose Haven guests to address their medical concerns. This gives our guests the opportunity to get one-on-one advice from a professional on first aid, nutrition, other health related issues.

Communications

We help guests stay connected to social service agencies, housing resources, prospective employers, family, and others by providing onsite mailboxes and access to phones, computers, phone charging and WiFi, empowering them to stay informed and regain independence.

Laundry

New in 2022 are onsite washers and dryers to support guests' hygiene needs.

Children's Services

Rose Haven distributes baby supplies, diapers, school essentials, clothing, and warm coats to hundreds of children. In addition, we host an exceptional gift program bringing new toys, joy, and light to more than 550 children in our community during the holidays.

Advocacy

Rose Haven Advocates meet one-on-one with guests to assess their unique situation, offering compassion, guidance and referrals to available resources and support programs. Onsite Advocates also provide financial aid for identification replacements, medical emergencies, transportation, utilities, employment uniforms, rental applications, storage units and other vital resources.

Mental Health Program

Mental health disorders are one of the most prevalent conditions reported by our unsheltered community. Supported by Providence Health and Services, in 2022 Rose Haven began the foundational work to launch a new Mental Health Program that will bridge the gap in services for the growing number of people needing mental health support. We are committed to meeting this growing need through support groups, onsite 1:1 therapy, peer support and the establishment of an internship program.

Classes and Activities

Designated space allows us to provide programs facilitated by volunteers and community partner organizations focusing on employment, socialization, and skill building.



Volunteer Hours

After a couple of years with limited volunteer opportunities, it was incredible to fully re-integrate volunteers back into the service model at Rose Haven during 2022. As a volunteer powered agency, we rely on their support in a plethora of ways: direct service, committee work, data entry, board service, teaching classes, hosting events, organizing donations and more. Hours logged by volunteers last year are the equivalent of nearly 10 full-time employees, valued at \$605,589. Rose Haven is clearly the epitome of community coming together to serve its most vulnerable members.



ROSE HAVEN

STRATEGIC PLAN

FY 2023-2024

MISSION

To provide day shelter, resources, emotional support, and community connections to women, children, and marginalized genders experiencing homelessness and poverty.



Individual Worth:

The life and varied experiences of every person is deeply valued and supported. We work towards ensuring the guests of Rose Haven feel recognized with a sense of dignity, belonging, and acceptance that values their individual choice.

Zeal (Love in Action):

Rose Haven embodies this energy through a holistic, person-centered, trauma-informed lens. We strive to provide support focused on guests' strengths, avoid retraumatization, and promote safety, healing and empowerment.



VALUES

Compassion:

Rose Haven welcomes each person by embodying respect, openness, empathy, and a non judgmental approach to our work.

Reconciliation:

All members of our community commit to valuing one another through respect and forgiveness, and we offer a process for guests to learn and redirect behaviors towards reconciliation with themselves and others.

Community:

As a community based organization that includes guests, agency partners, volunteers, staff, donors, and stakeholders, Rose Haven recognizes that our collaborative efforts are essential to fulfill our mission.

2023 & 2024 Pillars and Goals

1 Evolve Guest Services

Grow proven programs and expand service offerings with community partners to meet our guests' self-defined needs.

2 Optimize Operations

Enhance facilities, improve systems, and diversify operational make-up to provide quality, equitable support to the most guests.

3 Sustain Funding for Growth

Ensure financial stability of the agency through donor engagement, partnerships, and long-term funding strategies.

4 Prioritize Employee Wellness

Recruit, retain, and support our valuable team by promoting employee health and enabling sustainable service models.

5 Give Voice

Amplify the needs and challenges of our guests through data-driven insights and shared stories.

Diversity, Equity, Inclusion, Justice Statement

From the beginning, Rose Haven's mission, vision, and values have rooted themselves around creating safe spaces for equity to triumph against adversity. Years later, we find DEIJ at the center of our thinking, principles, policies, evolution, and culture. The "Equity & Inclusion Lens" is a DEIJ muscle that Rose Haven seeks to exercise and develop at pace with the changing environment our community lives in.

Over this strategic plan period, we continue to intentionally and proactively demonstrate our mission, vision, and values; including being aware of our blind spots and leveraging the Equity & Inclusion Lens to address them. We recognize new challenges in keeping true to our mission, equitable accessibility, and to our commitment toward safety and belonging at the Haven.

2022 Board of Directors

rosehaven.org



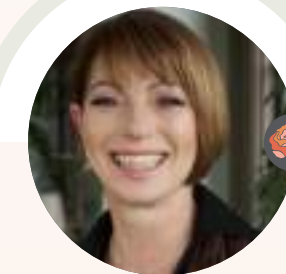
KATHY KELLY, PRESIDENT
EXECUTIVE COMMITTEE



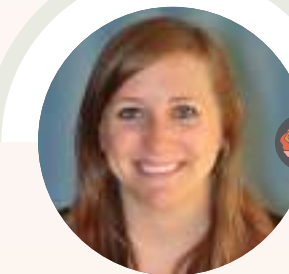
MARYANN SCHWAB, VICE PRESIDENT
EXECUTIVE COMMITTEE



MARY COSTANTINO, TREASURER
EXECUTIVE COMMITTEE



SHARRON GARGOSKY, SECRETARY
EXECUTIVE COMMITTEE



JOANNA HERRMANN, MEMBER
STRATEGIC PLANNING COMMITTEE CHAIR



LAUREN WILKINS, MEMBER
DEI COMMITTEE CHAIR



CODY JANE BAKER
MEMBER



SR. KATHLEEN HECHT
MEMBER



MIKE MALONEY
MEMBER



SCOTT NICHOLS
MEMBER



HAYDEN THOMAS
MEMBER



CAROL WILDER
MEMBER





Rose Haven Team


Service Location
1740 NW Gilsan St.
Portland, OR 97209


Mailing Address
PO Box 10405
Portland, OR 97296

Phone 503-248-6364
Email info@rosehaven.org
Web rosehaven.org

 [@rosehaven_pdx](https://twitter.com/rosehaven_pdx)

 [@rosehavenpdx](https://facebook.com/rosehavenpdx)

 [@rosehavenpdx](https://instagram.com/rosehavenpdx)

 [@rosehavenpdx](https://youtube.com/rosehavenpdx)

