



Rose Haven is a sanctuary from the street in Portland, offering compassion, practical assistance and community during the daytime hours to women and children facing loss of home, abuse and other disruptive life experiences.

2017 ANNUAL REPORT

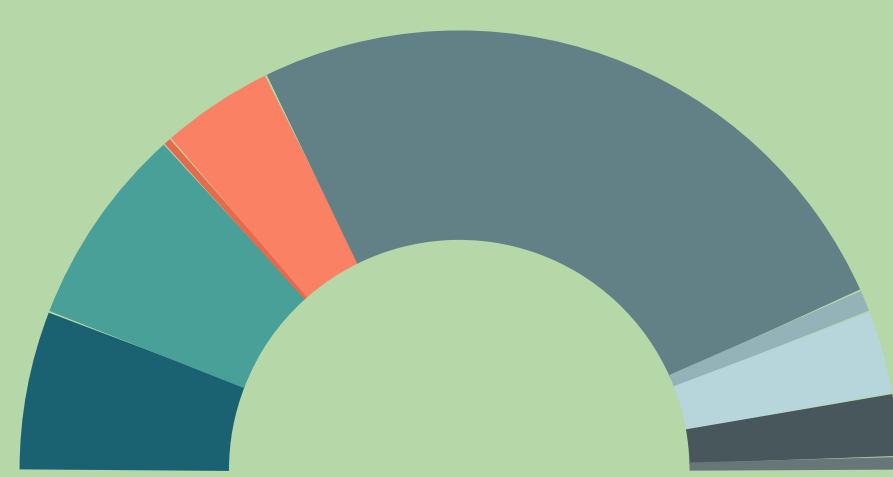
Safety

Providing refuge for women and children 8:30am-4pm weekdays.

We serve:
80-110 People Daily
3,383 Annually
20,389 Total Visits 2017



Who We Serve



African American (11.72%)	Unknown (14.89%)
Pacific Islander (0.55%)	Combined Ethnicity (8.35%)
Caucasian (51.07%)	Asian American (1.66%)
Native American (6.18%)	Latina (4.59%)
Other (0.99%)	

75% Women - 25% Children

Support

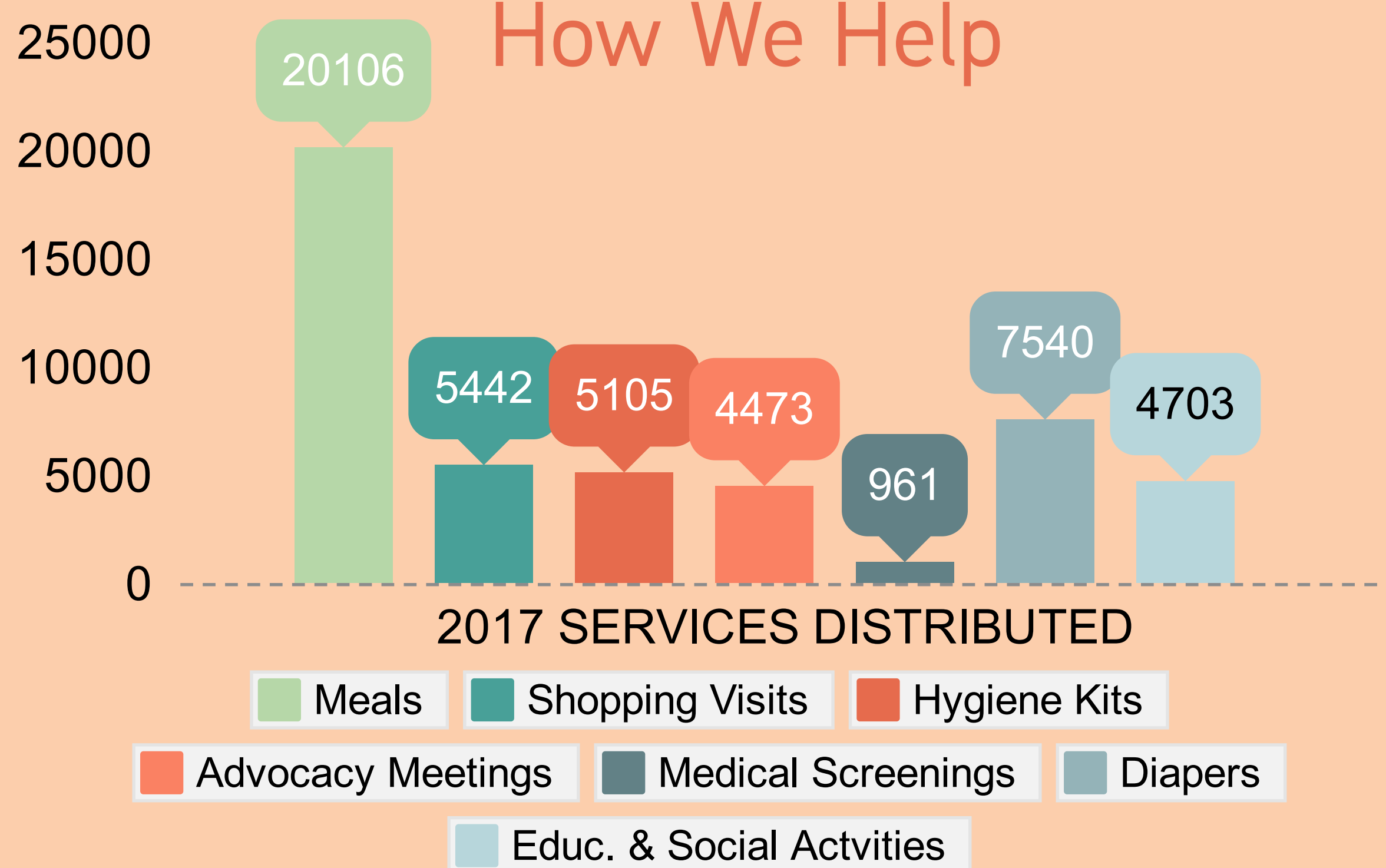
We believe in the value of each individual and operate with dignity, respect and love for all.

685 Active Volunteers
8 Staff Members
100+ Community Partners

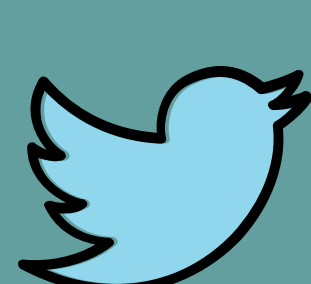


The number of children Rose Haven served increased by 20% in 2017. Domestic violence is the leading cause of homelessness amongst women. 72% of our homeless population has mental and/or physical disabilities.

How We Help



Follow Us On Social Media



rosehaven.org

How You Can Help

Make a Financial Contribution
Volunteer
Host a 3rd Party Event
Donate Supplies
Include Us In Your Estate Plan

2017 Financial Support



Individuals (49.13%)
Grants and Foundations (36.09%)
Corporations and Organizations (12.62%)
Interest/Other (2.16%)